

K - SERIES

A VERSATILE RANGE OF CO₂ LASER
PRODUCTS FOR HIGH QUALITY

CODING AND MARKING AT A VERY LOW COST

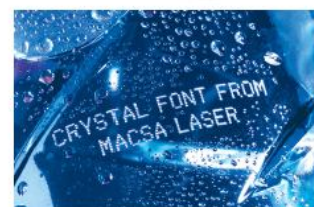


Sinmar Trading Est.

PO Box No. 271578
11352 Riyadh, Saudi Arabia

Ph. 011 2229555 - 4716289
Fax. 011 2222027 - 4716289
printpack@sinmar-ksa.com
www.sinmar-ksa.com/printandpack

K-1000 by **MACSA**
Fast. Powerful. Reliable.



Macsa id[®]
a code you can trust

A CODE YOU CAN TRUST

- **THE INCREDIBLY COMPACT DESIGN** along with an adjustable marking head ensures that you can install this system on even the most complicated production lines. The system can even be integrated with other manufacturer's equipment.
- **THIS EASY TO USE SYSTEM** works through a combination of extremely fast mirror tracking systems and the most modern software and hardware you can be assured of reliable high speed marking.
- **THE LATEST IN LASER TECHNOLOGY** along with the fact that you don't need expensive replacements results in a system that requires little maintenance, minimal operational costs and no headaches.
- **THE MARKING PROCESS** is unimpeded because you don't need an expensive and space consuming PC on the production line. Furthermore in Macsa lasers, with MACSA's software, you can link several K-1000 laser systems together for even greater control and increased production or to increase the graphic features of the K-1000 laser connecting a PC through the full graphic interface kit.
- **ALL OF THESE FEATURES** ensures that everyone of your products is marked with the same high degree of quality and permanence guaranteeing accurate identification for the lifetime of your products.
- **A DIVERSE RANGE OF MATERIALS** can be marked utilizing the K-1000 system including labels, cardboard, PET, glass, coating and wood.
- **K-1000 ARE FAST** They are high powered and equipped with ultra high speed galvos enabling them to match the speeds of the fastest production lines.
- **K-1000 ARE POWERFUL** They can mark large complex graphics and deliver quality laser marks even on difficult substrates and when time is limited.
- **K-1000 ARE RELIABLE** The KIP variant has a remote IP65 head enabling it to operate reliably at the level of the production line in the damp conditions of a hose down environment.
- **CONSISTENT LONG TERM HIGH QUALITY PRINTING** There are no printheads which need cleaning or which degrade over time and need replacing.
- **DELIVER A PERMANENT CODE** Ink based alternatives may be scratched or rubbed off the substrate.
- **BETTER PRINTING IN DUSTY ENVIRONMENTS** Laser coders are not disadvantaged by dust whereas a thermal transfer printhead will need a regular cleaning and an inkjet printhead will need regular flushing to prevent blockages.

USER INTERFACE FOR LASER SYSTEMS

HAND-HELD TERMINAL (1)

Connection via RS-232 with ScanLINUX software included in laser marking system • creation and editing of text messages • able to create up to 4 lines of text • 4 types of MFF fonts • modify message XY position • time marking in multiple formats • clock adjustment • sequential numbers • password protection system.

TOUCH SCREEN (2)

Connection via RS-232 with ScanLINUX software included on marking laser system • Handheld Terminal emulator • allows control of the laser marking system from a remote touch screen.

PERSONAL COMPUTER (3)

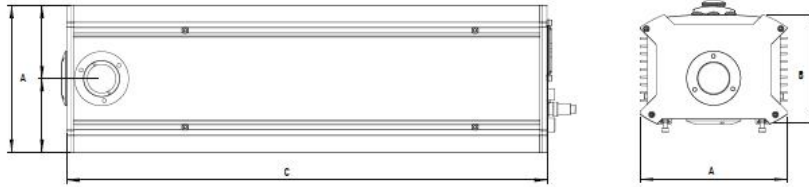
Connection via TCP/IP (Marca Lite™) or Ethernet TCP/IP (Marca™) • compatible with all kinds of operating systems Windows NT/Me/2000/XP/7/8 • able to control the laser marking system from a remote PC • confers powerful graphics capabilities • able to create messages in all of the marking area.



3



K-1000



SYSTEM TYPE		K-1010 SP net	K-1010 PLUS	K-1030 SP net	K-1030 PLUS			
POWER		10W		30W				
WAVELENGTH		9.3µm / 10.2µm / 10.6µm						
MAINS SUPPLY		125V / 230V 50/60 Hz (1 Fase + N) 330VA		125V / 230V 50/60 Hz (1 Fase + N) 660VA				
DIMENSIONS	Split Head (optional)	108x106,5x114 mm						
	Tube (A x B x C)	190x141x621 mm		235x193x656 mm				
WEIGHT		Net: 19kg Gross: 24kg		Net: 32kg Gross: 40kg				
SYSTEM		Laser source, control and power electronics, CPU and scanners built into the laser tube.						
OPTICS	Working distance (mm)	Focal length (mm)	Marking area (mmxmm)	Beam diameter MODELS SP (µm)	Beam diameter MODELS PLUS (µm)			
	85	95	60x60	<385µm -S	<192µm -0			
	115	125	75x75	<506µm -0	<253µm -0			
	150	160	100x100	<810µm -0	<405µm -S			
	190	200	100x100	<972µm -0	<486µm -0			
	230	240	150x150	<1296µm -0	<648µm -0			
	310	320	200x200	<1660µm -0	<830µm -0			
400	410	250x250	<385µm -S	<192µm -0				
µm: microns S: Standard 0: Optional								
SOFTWARE	<ul style="list-style-type: none"> ScanLinux V5.2.7 and higher. Software Marca V5.6.9.a and higher. Internal bar code. Software Marca Lite. 							
USER INTERFACE	<ul style="list-style-type: none"> Hand held terminal / Touch screen / PC 							
CONTROL BY	<ul style="list-style-type: none"> Hand held terminal with ScanLinux software. Touch screen with ScanLinux software. Full graphics interface: it includes Marca™ software, Hasp key and Ethernet cable (TCP/IP). Software Marca Lite: it includes Marca™ software, Hasp key and Ethernet cable (TCP/IP). 							
MARKING HEAD	KS-1000 - 9,3 µm		KS2-1000 - 10,2 µm		KS-1000 - 10,6 µm			
	CO ₂ sealed laser tube R.F. technology Wavelength: 9,3 microns		CO ₂ sealed laser tube R.F. technology Wavelength: 10,2 microns		CO ₂ sealed laser tube R.F. technology Wavelength: 10,6 microns			
	Accessories: Beam pointer- Shaft encoder kit - Mounting support - Photocell kit							
ENVIRONMENTAL CONDITIONS	10°C (50°F) to 40°C (104 °F) external temperature Humidity <95% non-condensation No vibrations							
K-1010 PLUS SHS (10.6 µm) SPEED	PAPER LABEL	Max. Speed line (m/min)		Cadence (mm)		Scanners speed (mm/s)		
		1 Line / 8 Charact.	575	<i>290</i>	245000	<i>124000</i>	20000	<i>65</i>
		2 Line / 8 Charact.	310	<i>140</i>	130000	<i>60000</i>	20000	<i>65</i>
		3 Line / 8 Charact.	190	<i>95</i>	80000	<i>40700</i>	20000	<i>65</i>
	PET	Max. Speed line(m/min)		Cadence (mm)		Scanners speed (mm/s)		
		1 Line / 8 Charact.	425	<i>265</i>	182000	<i>113500</i>	10000	<i>75</i>
		2 Line / 8 Charact.	215	<i>130</i>	92100	<i>55700</i>	10000	<i>75</i>
		3 Line / 8 Charact.	145	<i>85</i>	60000	<i>36400</i>	10000	<i>75</i>
	GLASS	Max. Speed line(m/min)		Cadence (mm)		Scanners speed (mm/s)		
		1 Line / 8 Charact.	195	<i>175</i>	83500	<i>75000</i>	2000	<i>120</i>
		2 Line / 8 Charact.	105	<i>85</i>	45000	<i>36400</i>	2000	<i>120</i>
		3 Line / 8 Charact.	65	<i>55</i>	27800	<i>23500</i>	2000	<i>120</i>
Cristal Font type: Matrix:7x5 Speed:60000 Microstep:40 Delay: 20	Max. Speed line(m/min)		Cadence (mm)		Scanners speed (mm/s)			
	1 Line / 8 Charact.	50	<i>45</i>	21400	<i>19200</i>	2000	<i>120</i>	

Normal → Newpal Font
Italic → Crystal Font

K-1000 by MACSA

Fast. Powerful. Reliable.



MACSA ID, S.A.
 T. +34 902 101 828 - F. +34 902 103 915
 Girona 46, 08242 Manresa, Barcelona SPAIN
 macsa@macsa.com - www.macsalaser.com



Sinmar Trading Est
 PO Box No. 271578
 11352 Riyadh Saudi Arabia
 Ph No. 011 222955-4716289
 Fax No. 011 2222027-4716289
 printpack@sinmar-ksa.com
 www.sinmar-ksa.com/printandpack

Macsa id
a code you can trust